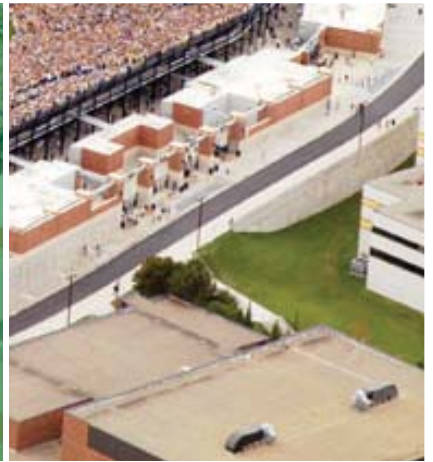


# CITRUS BOWL RENOVATION

## Professional Program Management Services

THE RIGHT PEOPLE. THE RIGHT RESULTS.®





August 24, 2012

Orlando Venues  
Attn: Mr. Allen Johnson  
400 West Church Street  
Suite 200  
Orlando, FL 32801

Re: Citrus Bowl Renovation Professional Program Management Services

Allen,

It is with great pleasure that we present to you our qualifications for Program Management Services relative to the Citrus Bowl Renovation. Thanks for taking the time to meet with me this week to discuss this exciting upcoming project. Given the high profile nature of a project such as this, we understand your concern that this project is extremely successful. As such, we have put together a seasoned/highly qualified team of sports renovation construction professionals. They will assist in leading your project and integrate with your staff. These professionals possess the skills to address project issues and major challenges. Some of the major challenges we see are:

- **Experienced/Fully Integrated Program Manager** – Recognizing your task of operating all of your current facilities while concurrently renovating/expanding The Citrus Bowl; we propose to integrate our personnel with a few key members of your staff to act as one cohesive unit. This will ensure you have the Best of the Best on your team while keeping the staff size streamlined and keeping your costs minimized.
- **Blueprint/Local/MWBE** – With the Citrus Bowl being the last of the Orlando's Venues constructed, it has to serve as the "great ending" to this historic initiative. Your/our team understands all the Blueprint/Local/MWBE programs and together at the Amway Center we wrote a great "opening chapter" by exceeding all expectations. All of these proposed professionals have worked in the Orlando/Florida market and will reside in the Orlando area, making them available at a moment's notice.
- **No Disruption to Your Operating Facility** – We understand this is a fully operational functioning facility and no interruptions can occur. All of our proposed personnel have experience constructing and renovating existing/operating facilities without disrupting their operations and events.
- **Budget/Schedule Control & Management** – Most likely the largest fear of all ownership entities is keeping their project on budget and completing it on time. This proposed staff has a stellar record in both of these important areas of concern. Together we possess the skills to ensure a successful outcome in terms of both cost and schedule for your project.

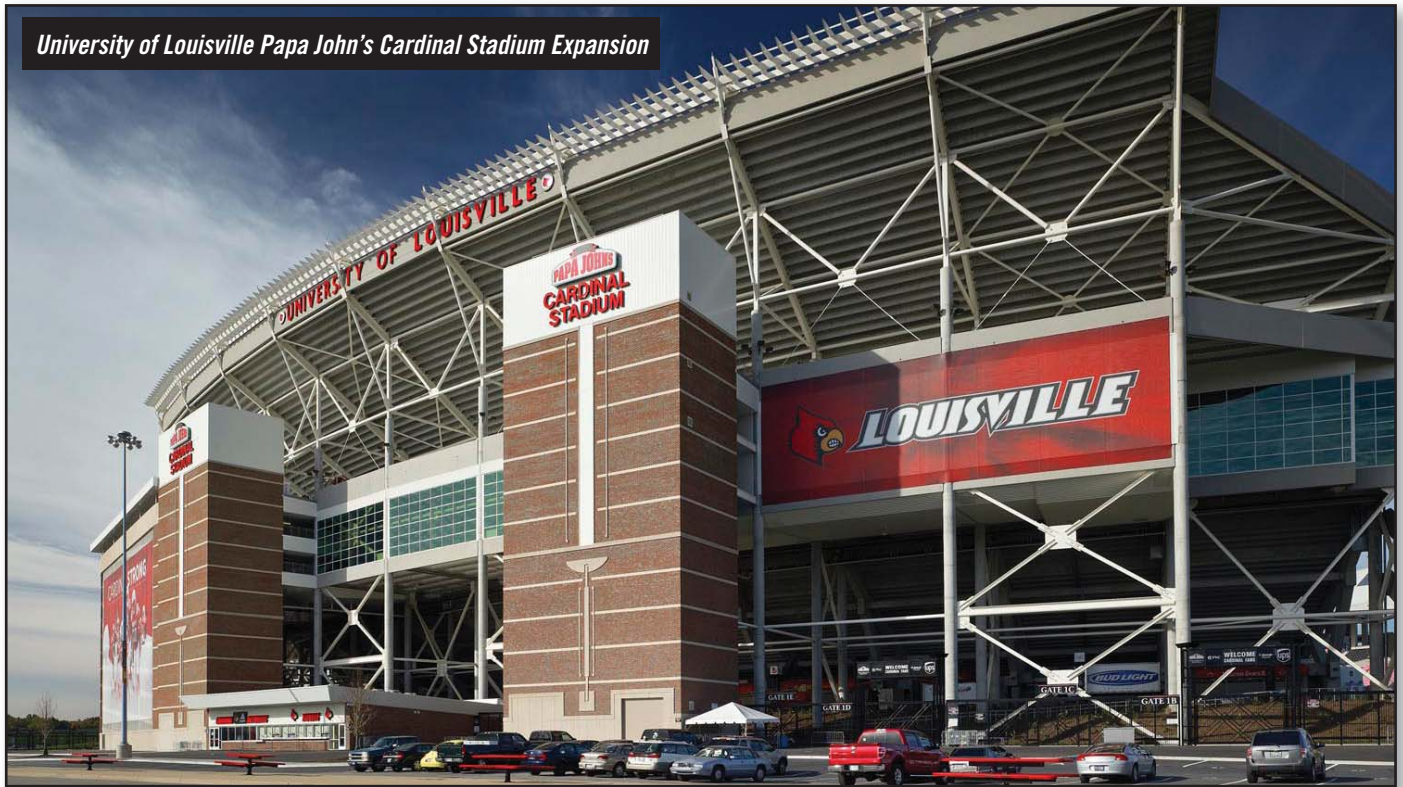
I have personally handpicked this team to serve your needs and the needs of your renovation/expansion project. Please know that our team stands ready to serve your project's needs. I look forward to discussing this exciting upcoming project with you further.

Hunt Construction Group, Inc.

A blue ink signature of Scott Blanchard, consisting of a stylized 'S' and 'B' followed by a flourish.

Scott Blanchard  
Vice President

Cc: Jay Berlinsky  
Ken Johnson



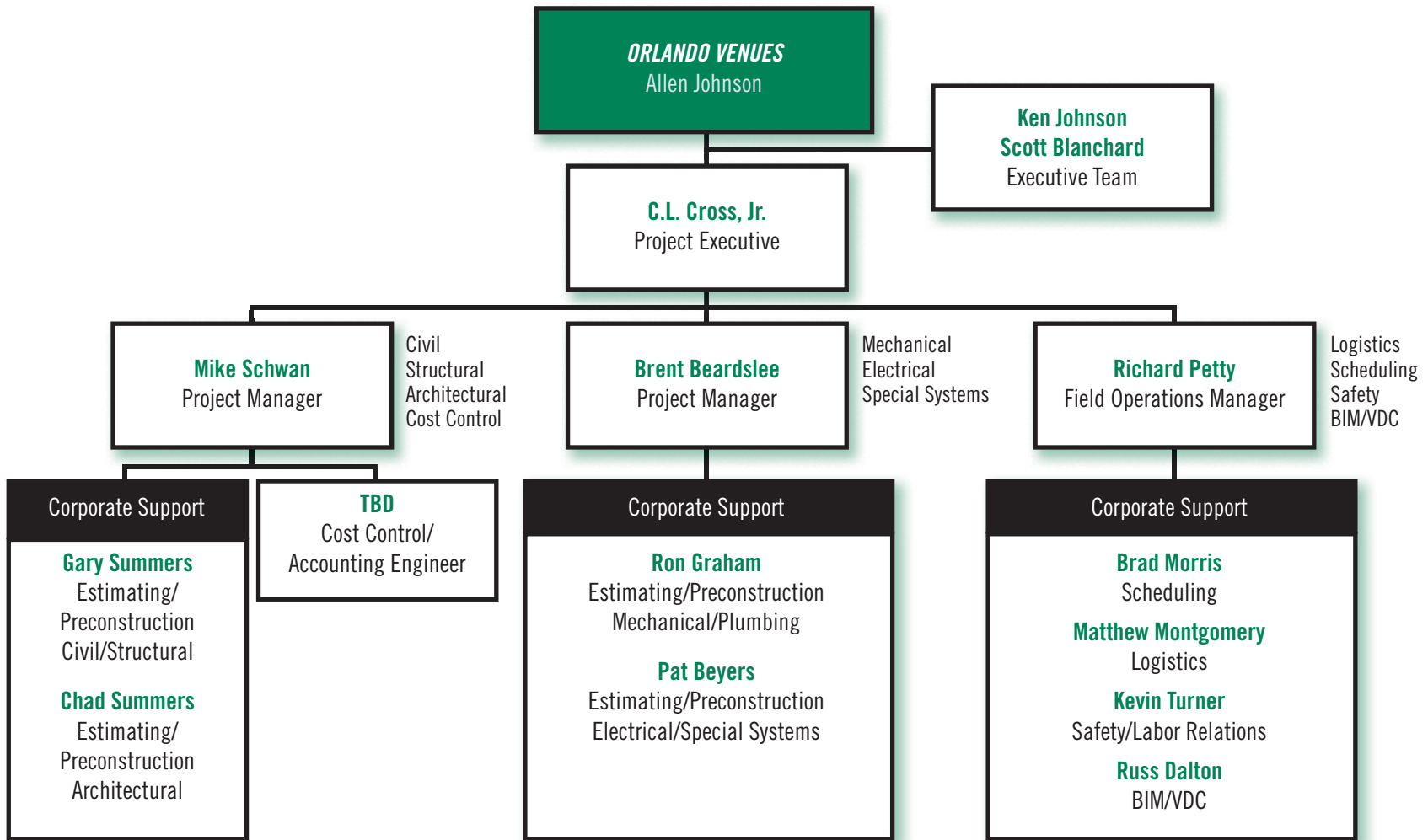
**SECTION 1**      **Key Personnel**

**SECTION 2**      **Relevant Experience**

**SECTION 3**      **Cost Proposal**

# CITRUS BOWL RENOVATIONS

## Program Management – Preconstruction/Construction Organizational Chart





## KENNETH L. JOHNSON

### *Executive Vice President & Division Manager*

#### PROJECT RESPONSIBILITIES

- Overall corporate responsibility for the performance of the project team
- Provides corporate leadership, experience and technical expertise
- Anticipates and resolves construction issues
- Ensures that client expectations are met
- Resource allocation and daily communication with the contract/construction manager to facilitate on-time, within budget project delivery

#### YEARS OF EXPERIENCE

27

#### AREAS OF EXPERTISE

Construction Alternatives  
Preconstruction Services  
Multiple Project Management  
Aviation Facilities

#### EDUCATION

B.S., Building Construction Management  
Purdue University

#### LICENSING/PROFESSIONAL AFFILIATIONS

Carpentry Trade (Central Nine Vocational School)  
Member - American Association of Airport Executives (AAAE)  
Indiana Athletic Club - Member  
LEED: New Construction - Technical Review / Exam Prep  
Member - Design-Build Institute of America (DBIA)

#### PROJECT EXPERIENCE

##### **Kauffman Stadium Expansion & Renovation**

A renovation and expansion to the 1,200,000 SF, 37,920 seat stadium, including a Hall of Fame Building, restaurant, three-story administration building, Diamond Club, plaza level concessions, restrooms, expanded concourses and several other new amenities and renovations. Home of MLB's Kansas City Royals.  
Kansas City, MO

##### **Charlotte Sports Park Renovation and Addition**

The renovation and addition of an existing spring training facility for MLB's Tampa Bay Rays. New construction included a 44,000 SF, two-story clubhouse, a restroom/concession building, a ticket building and an outfield tiki bar. Renovations included the reconstruction of a three-story press/suite tower including an 11,300 SF addition, new restroom and concession areas, replacement of aluminum seat benches with 5,000 individual fixed stadium seats, increasing total capacity to 7,000 seats, a 19,000 SF outfield boardwalk and new playing fields on five existing practice fields.  
Port Charlotte, FL

##### **Ed Smith Stadium Renovations**

Renovation and expansion of the Ed Smith Spring Training Stadium, as the new spring training home of MLB's Baltimore Orioles. The project includes an 85,000 SF concourse, luxury suites, concessions, press-boxes, owners' suites, shaded standing areas to watch the game, and a complete renovation of the existing clubhouse.  
Sarasota, FL

##### **Ford Field**

A 1,350,000 GSF, 21st-Century football stadium featuring 65,000 seats and 133 suites. Home of the NFL's Detroit Lions.  
Detroit, MI

##### **Marlins Park**

A 937,000 SF, 37,000-seat, three-panel retractable roof baseball stadium featuring 42 luxury suites, eight party suites, home run porch, state-of-the-art concession and restroom amenities, a reflection of Miami's diverse culture, Western Plaza for year-round use, Taste of Miami food area, half-acre retractable window wall, street-level team store, and high definition scoreboard. Home of MLB's Miami Marlins.  
Miami, FL

## KENNETH L. JOHNSON

### *Executive Vice President & Division Manager*



**Kauffman Stadium Expansion & Renovation**



**Charlotte Sports Park Renovation and Addition**



**Ford Field**

#### **Citi Field**

A new 1,200,000 SF open-air baseball stadium featuring five floors, 54 luxury suites, four restaurants and a total capacity of 41,800 including standing room. Home of MLB's New York Mets.  
New York, NY

#### **Nationals Park**

A 1,176,151 SF, 41,000-seat, open-air, state-of-the-art baseball stadium featuring 90 luxury suites, six levels, a five-level parking structure, a six-level parking structure and surface parking lot. Home of MLB's Washington Nationals.  
Washington, DC

#### **Busch Stadium**

A 1,500,000 SF baseball facility, including 46,844 seats and 106 suites and party rooms. Additional scope of work included the demolition of old Busch Stadium. Home of MLB's St. Louis Cardinals.  
St. Louis, MO

#### **Comerica Park**

A 1,200,000 SF, 40,000-seat open-air baseball stadium that features 108 suites, carousel, ferris wheel, a 1,000-car parking garage and surrounding site development. Home of MLB's Detroit Tigers.  
Detroit, MI

#### **Green Bay Packers**

Provided preconstruction services for new football stadium.  
Green Bay, WI

#### **Barclays Center**

A 670,000 SF multi-purpose arena featuring 18,000 seats, and 105 luxury suites. The facility will host NBA games, concerts, circuses, minor league hockey games and other family events. Future home of the NBA's Brooklyn Nets.  
Brooklyn, NY

#### **Amway Center**

A new 800,000 SF, seven-level, 18,500-seat multi-purpose arena featuring 56 suites, 1,428 club seats, and 328 loge seats. Home of the NBA's Orlando Magic.  
Orlando, FL

#### **CONSOL Energy Center**

A 735,000 SF, seven level, 18,500-seat multi-purpose hockey arena including 68 suites, four party suites, 2,000 club seats and 236 loge box seats. The home of the NHL's Pittsburgh Penguins.  
Pittsburgh, PA

#### **Ford Center**

A 280,000 SF, 11,000-seat multi-purpose indoor arena featuring 21 luxury suites, loge seating and 516 club seats on five levels. This facility will host basketball, hockey, family shows and other entertainment events. Home of the University of Evansville Purple Aces and the CHL's Evansville IceMen.  
Evansville, IN

*Abbreviated Resume*



## SCOTT T. BLANCHARD

### Vice President

#### PROJECT RESPONSIBILITIES

- Point person for the Owner through preconstruction and construction
- Corporate responsibility for the performance of the project team both home office and on-site
- Provides leadership, experience and technical expertise
- Anticipates and resolves construction issues
- Ensures that client expectations are met
- Resource allocation and daily communication with the contract/construction manager to facilitate on-time, within budget project delivery

#### YEARS OF EXPERIENCE

25

#### AREAS OF EXPERTISE

Sports Construction  
Preconstruction Services  
Project Planning  
Cost Estimating  
Constructability Issues  
Scheduling

#### EDUCATION

B.S., Building Construction Management  
Purdue University

#### LICENSING/PROFESSIONAL AFFILIATIONS

40th & 41st Annual Construction Project Management Conference Seminar  
First Aid & CPR Seminar  
Excavation, Competent Person Training Seminar  
Prolog  
Hunt EEO Construction Manager of the Year Award - 2006

#### PROJECT EXPERIENCE

##### EverBank Field Renovation

A 700,000 SF, open-air football stadium featuring 73,000 to 83,000 seats and 94 suites. Work included the demolition of the existing Gator Bowl structure and playing field with the exception of the structural framework supporting the West Upper Concourse and Upper Level seating bowl. Home of the NFL's Jacksonville Jaguars.  
Jacksonville, FL

##### RCA Dome Renovations

An existing suite renovation into super suites, relocation of the existing press areas, club seating areas in the north and south lower seating bowl. Former home of the NFL's Indianapolis Colts.  
Indianapolis, IN

##### Ed Smith Stadium Renovations

Renovation and expansion of the Ed Smith Spring Training Stadium, as the new spring training home of MLB's Baltimore Orioles. The project includes an 85,000 SF concourse, luxury suites, concessions, press-boxes, owners' suites, shaded standing areas to watch the game, and a complete renovation of the existing clubhouse.  
Sarasota, FL

##### Charlotte DNCC

Temporary modification and the restoration of Time Warner Cable Arena for the 2012 Democratic National Convention.  
Charlotte, NC

##### Coliseum Renovation at the Indiana State Fairgrounds

A 172,000 SF renovation of the existing building, which includes 11,000 seats, two concourses, an ice rink rebuild and an addition of a new ice sheet and arena for public skating.  
Indianapolis, IN

##### USF Sun Dome Renovation/Feasibility Study

Developed and proposed modifications to the existing 250,000 SF 10,000-seat arena. Renovations contemplated bowl modifications including seating, additional office space, enlarged concourses, club areas and concessions.  
Tampa, FL

## SCOTT T. BLANCHARD

### *Vice President*



RCA Dome Renovations

#### **Lucas Oil Stadium**

A 1,800,000 SF retractable roof stadium consisting of 63,000-seats including 7,100 club seats and 150 suites, eight of which are at field level. Home of the NFL's Indianapolis Colts, NCAA basketball championships, major conventions and other events.  
Indianapolis, IN

#### **Bright House Networks Field**

A 200,000 SF MLB training facility and community sports complex accommodating the spring training, Florida State League and fall instructional league activities of the Philadelphia Phillies. The facility includes a ballpark with approximately 7,000 fixed seats and associated amenities, outfield berm seating for 1,000 fans, nine private suites and a diamond dugout suite.  
Clearwater, FL

#### **Amway Center**

A new 800,000 SF, seven-level, 18,500-seat multi-purpose arena featuring 56 suites, 1,428 club seats, and 328 loge seats. Home of the NBA's Orlando Magic.  
Orlando, FL



Lucas Oil Stadium

#### **Barclays Center**

A 670,000 SF multi-purpose arena featuring 18,000 seats, and 105 luxury suites. The facility will host NBA games, concerts, circuses, minor league hockey games and other family events. Future home of the NBA's Brooklyn Nets.  
Brooklyn, NY

#### **United Center**

A 1,000,000 SF, 20,000-seat multi-purpose arena featuring 214 luxury suites, stadium club and banquet facility. Home of the NBA's Chicago Bulls and the NHL's Chicago Blackhawks.  
Chicago, IL



EverBank Field

#### **Bankers Life Fieldhouse**

A 760,000 SF, 19,000-seat, five-level, primary basketball arena featuring 69 suites, two party suites, restaurants and retail shops. Includes two club restaurants, a team store, box office with 18 ticket windows, more than 100 concessions, a four-sided video scoreboard suspended above center court, full size practice court and a complete broadcasting studio. Home of the NBA's Indiana Pacers and the WNBA's Indiana Fever.  
Indianapolis, IN

#### **Time Warner Cable Arena**

An 800,000 SF multipurpose arena with approximately 18,500 seats, 64 luxury suites, 58 loge boxes and 2,800 club/courtside seating. The arena hosts a multitude of events including the NBA's Charlotte Bobcats, WNBA's Charlotte Sting, ECHL's Charlotte Checkers, center and end stage concerts and other family oriented events.  
Charlotte, NC

#### **Toyota Center**

A 790,000 GSF, 18,000-seat arena featuring 79 regular suites, 14 courtside suites and 12 party suites. Home of the NBA's Houston Rockets, the AHL's Houston Aeros and the WNBA's Houston Comets.  
Houston, TX





**C.L. CROSS, JR.**  
*Project Executive*

**PROJECT RESPONSIBILITIES**

- Performance of the project team both home office and on-site
- Ensures contract compliance
- Provides leadership, experience and technical expertise
- Foresees and resolves construction issues
- Ensures client's expectations are met
- Ensures that all necessary resources are available to deliver the project
- Daily involvement with the project manager to facilitate on-time, within budget delivery of the project
- Project planning and logistical considerations

**YEARS OF EXPERIENCE**

35

**AREAS OF EXPERTISE**

Project Management  
Supervision  
Safety

**LICENSING/PROFESSIONAL AFFILIATIONS**

Graduated United Brotherhood of Carpenters and Joiners of America Apprenticeship School  
Journeyman United Brotherhood of Carpenters and Joiner of America  
Introduction to Prolog Manager  
Project Manager - Safety Excellence Award - (Time Warner Cable Arena 2004)  
Project Safety Excellence Award - (Time Warner Cable Arena 2004)  
Project Manager - EEO Award - (Time Warner Cable Arena 2003)

**PROJECT EXPERIENCE**

**Sun Life Stadium Expansion**

A 360,000 SF renovation and expansion to existing stadium that consisted of eight additional escalators, four elevators, additional concessions and retail spaces, as well as two mezzanines added to two levels. Expansion was for the BCS Championship and the Super Bowl. Home of the NFL's Miami Dolphins and the University of Miami Hurricanes.  
Miami, FL

**Tropicana Field Renovation**

The complete renovation of the 43,000-seat domed baseball stadium and a team parking facility. Home of MLB's Tampa Bay Rays.  
St. Petersburg, FL

**EverBank Field Renovation**

A 700,000 SF, open-air football stadium featuring 73,000 to 83,000 seats and 94 suites. Work included the demolition of the existing Gator Bowl structure and playing field with the exception of the structural framework supporting the West Upper Concourse and Upper Level seating bowl. Home of the NFL's Jacksonville Jaguars.  
Jacksonville, FL

**Charlotte DNCC**

Temporary modification and the restoration of Time Warner Cable Arena for the 2012 Democratic National Convention.  
Charlotte, NC

**Raymond James Stadium**

A 66,321-seat open-air football stadium featuring 164 luxury suites, 12,000 club seats and space for an additional 60 suites. Home of the NFL's Tampa Bay Buccaneers.  
Tampa, FL

**Heinz Field**

A 1,500,000 SF, 65,000-seat open-air football stadium featuring 127 luxury suites and the Fan Experience Great Hall that memorializes the Steelers History and "Six Super Bowl Championships." Home of the NFL's Pittsburgh Steelers and the University of Pittsburgh Panthers.  
Pittsburgh, PA

## C.L. CROSS, JR. *Project Executive*



Sun Life Stadium Expansion



Tropicana Field Renovation



EverBank Field Renovation

### **Tropicana Field**

A 1,100,000 SF, 43,000-seat multi-purpose domed stadium featuring 65 luxury suites and is formerly known as the Thunderdome and Suncoast Dome. The stadium has a tension cable supported fabric roof system and four exterior ramps. Home of MLB's Tampa Bay Rays. St. Petersburg, FL

### **CONSOL Energy Center**

A 735,000 SF, seven level, 18,500-seat multi-purpose hockey arena including 68 suites, four party suites, 2,000 club seats and 236 loge box seats. The home of the NHL's Pittsburgh Penguins. Pittsburgh, PA

### **Time Warner Cable Arena**

An 800,000 SF multipurpose arena with approximately 18,500 seats, 64 luxury suites, 58 loge boxes and 2,800 club/courtside seating. The arena hosts a multitude of events including the NBA's Charlotte Bobcats, WNBA's Charlotte Sting, ECHL's Charlotte Checkers, center and end stage concerts and other family oriented events. Charlotte, NC

### **Orlando Magic Arena**

A 16,000-seat multi-purpose arena. Former home of the NBA's Orlando Magic. Orlando, FL

### **Miami Heat Arena**

A 15,000-seat multi-purpose arena. Home of the NBA's Miami Heat. Miami, FL

### **Giant Center**

A 314,000 SF, four level 10,500-seat multi-purpose arena including 40 luxury suites, 688 club seats and a club lounge. The facility hosts basketball, hockey, ice shows, concerts, family events and special attractions. Home of the AHL's Hershey Bears. Hershey, PA

### **Pan Am Games Aquatics Centre Preconstruction**

Preconstruction for a 412,700 GSF for a four-level aquatics centre, field house and Sports Institute of Ontario. Toronto, ON



## **MICHAEL W. SCHWAN**

### *Project Manager*

#### **PROJECT RESPONSIBILITIES**

- On-site management to ensure successful, safe and timely completion
- Supervises jobsite staff
- Implements policies and procedures
- Makes on-site day-to-day decisions regarding cost analysis and budget control, scheduling, quality and safety
- Oversees field operations
- Monitors all reports for timeliness and accuracy
- Maintains communications with owners, architects, and trade/subcontractors
- Coordination and supervision of trade/subcontractors

#### **PROJECT EXPERIENCE**

##### **Sun Life Stadium Expansion**

A 360,000 SF renovation and expansion to existing stadium that consisted of eight additional escalators, four elevators, additional concessions and retail spaces, as well as two mezzanines added to two levels. Expansion was for the BCS Championship and the Super Bowl. Home of the NFL's Miami Dolphins and the University of Miami Hurricanes.  
Miami, FL

##### **Charlotte DNCC**

Temporary modification and the restoration of Time Warner Cable Arena for the 2012 Democratic National Convention.  
Charlotte, NC

##### **Heinz Field**

A 1,500,000 SF, 65,000-seat open-air football stadium featuring 127 luxury suites and the Fan Experience Great Hall that memorializes the Steelers History and "Six Super Bowl Championships." Home of the NFL's Pittsburgh Steelers and the University of Pittsburgh Panthers.  
Pittsburgh, PA

##### **CONSOL Energy Center**

A 735,000 SF, seven level, 18,500-seat multi-purpose hockey arena including 68 suites, four party suites, 2,000 club seats and 236 loge box seats. The home of the NHL's Pittsburgh Penguins.  
Pittsburgh, PA

##### **Time Warner Cable Arena**

An 800,000 SF multipurpose arena with approximately 18,500 seats, 64 luxury suites, 58 loge boxes and 2,800 club/courtside seating. The arena hosts a multitude of events including the NBA's Charlotte Bobcats, WNBA's Charlotte Sting, ECHL's Charlotte Checkers, center and end stage concerts and other family oriented events.  
Charlotte, NC

##### **Giant Center**

A 314,000 SF, four level 10,500-seat multi-purpose arena including 40 luxury suites, 688 club seats and a club lounge. The facility hosts basketball, hockey, ice shows, concerts, family events and special attractions. Home of the AHL's Hershey Bears.  
Hershey, PA

#### **YEARS OF EXPERIENCE**

18

#### **AREAS OF EXPERTISE**

Architectural and Structural Construction

#### **EDUCATION**

A.S., Building Construction and Estimating  
Community College of Allegheny County,  
Pittsburgh, PA

#### **LICENSING/PROFESSIONAL AFFILIATIONS**

Introduction to Prolog Manager  
Primavera Project Management, Version 5.0



## BRENT H. BEARDSLEE

### *Project Manager*

#### PROJECT RESPONSIBILITIES

- On-site management to ensure successful, safe and timely completion
- Supervises jobsite staff
- Implements policies and procedures
- Makes on-site day-to-day decisions regarding cost analysis and budget control, scheduling, quality and safety
- Oversees field operations
- Monitors all reports for timeliness and accuracy
- Maintains communications with owners, architects, and trade/subcontractors
- Coordination and supervision of trade/subcontractors

#### YEARS OF EXPERIENCE

14

#### AREAS OF EXPERTISE

Sports Facilities  
Commissioning  
MEP Systems and Design

#### EDUCATION

B.A., History & Political Science  
Saginaw Valley State University

#### LICENSING/PROFESSIONAL AFFILIATIONS

Introduction to Prolog Manager  
Roundtable Presentation at the American Industrial Hygiene Association  
OSHA Construction 30 Hour  
U.S. Army Corp of Engineers - Construction Quality Management for Contractors Certification  
Environmental Awareness Training

#### PROJECT EXPERIENCE

##### **RCA Dome Renovations**

An existing suite renovation into super suites, relocation of the existing press areas, club seating areas in the north and south lower seating bowl. Former home of the NFL's Indianapolis Colts. Indianapolis, IN

##### **Coliseum Renovation at the Indiana State Fairgrounds**

A 172,000 SF renovation of the existing building, which includes 11,000 seats, two concourses, an ice rink rebuild and an addition of a new ice sheet and arena for public skating. Indianapolis, IN

##### **Lucas Oil Stadium**

A 1,800,000 SF retractable roof stadium consisting of 63,000-seats including 7,100 club seats and 150 suites, eight of which are at field level. Home of the NFL's Indianapolis Colts, NCAA basketball championships, major conventions and other events. Indianapolis, IN

##### **Heinz Field**

A 1,500,000 SF, 65,000-seat open-air football stadium featuring 127 luxury suites and the Fan Experience Great Hall that memorializes the Steelers History and "Six Super Bowl Championships." Home of the NFL's Pittsburgh Steelers and the University of Pittsburgh Panthers. Pittsburgh, PA

##### **USF Sun Dome Renovation/Feasibility Study**

Developed and proposed modifications to the existing 250,000 SF 10,000-seat arena. Renovations contemplated bowl modifications including seating, additional office space, enlarged concourses, club areas and concessions  
Tampa, FL

##### **Amway Center**

A new 800,000 SF, seven-level, 18,500-seat multi-purpose arena featuring 56 suites, 1,428 club seats, and 328 loge seats. Home of the NBA's Orlando Magic.  
Orlando, FL

##### **Ford Center**

A 280,000 SF, 11,000-seat multi-purpose indoor arena featuring 21 luxury suites, loge seating and 516 club seats on five levels. This facility will host basketball, hockey, family shows and other entertainment events. Home of the University of Evansville Purple Aces and the CHL's Evansville IceMen.  
Evansville, IN

*Abbreviated Resume*



## RICHARD W. PETTY

### *Field Operations Manager*

#### PROJECT RESPONSIBILITIES

- Performance of the project team both home office and on-site
- Provides leadership, experience and technical expertise
- Foresees and resolves construction issues
- Ensures client's expectations are met
- Resource allocation at the jobsite level
- Daily involvement with the project manager to facilitate on-time, within budget delivery of the project
- Project planning and logistical considerations
- Subcontractor scoping, buyout and GMP Development
- Maintains continuity of management from Preconstruction Phase to Construction Phase

#### PROJECT EXPERIENCE

##### **EverBank Field**

A 700,000 SF, open-air football stadium featuring 73,000 to 83,000 seats and 94 suites. Work included the demolition of the existing Gator Bowl structure and playing field with the exception of the structural framework supporting the West Upper Concourse and Upper Level seating bowl. Home of the NFL's Jacksonville Jaguars.  
Jacksonville, FL

##### **McCormick Place West Expansion**

A 2,100,000 SF expansion including 460,000 SF of exhibit space, 125,000 SF of meeting space and 100,000 SF of ballroom space, lobbies and registration related prefunction spaces, public concourses and circulation space, transportation facilities, food service spaces and support facilities.  
Chicago, IL

##### **Orange County Convention Center Phase V Expansion**

A 3,037,725 GSF expansion of the existing convention center with a pedestrian connector bridge to the existing facility.  
Orlando, FL

##### **Barclays Center**

A 670,000 SF multi-purpose arena featuring 18,000 seats, and 105 luxury suites. The facility will host NBA games, concerts, circuses, minor league hockey games and other family events. Future home of the NBA's Brooklyn Nets.  
Brooklyn, NY

##### **Amway Center**

A new 800,000 SF, seven-level, 18,500-seat multi-purpose arena featuring 56 suites, 1,428 club seats, and 328 loge seats. Home of the NBA's Orlando Magic.  
Orlando, FL

##### **Tampa Bay Times Forum**

A 650,000 SF, 20,500-seat multi-purpose arena featuring 72 suites. Home of the NHL's Tampa Bay Lightning and the AFL's Tampa Storm.  
Tampa, FL

#### YEARS OF EXPERIENCE

33

#### AREAS OF EXPERTISE

Preconstruction Services  
Conceptual Estimating  
Safety Adherence  
LEED  
Tenant Fit-Out  
Large Complex Projects  
Site Logistics

#### LICENSING/PROFESSIONAL AFFILIATIONS

Total Quality Management  
Indiana Central University - School of Business  
OSHA Construction 30 Hour



## RONALD L. GRAHAM

### *Estimating/Preconstruction - Mechanical/Plumbing*

#### PROJECT RESPONSIBILITIES

- Performance of the mechanical and electrical estimating team
- Responsible for providing constructability reviews on all mechanical and plumbing systems
- Oversight of the cost of mechanical and plumbing systems and equipment
- Daily involvement during the preconstruction phase and input during construction phase
- Provides leadership, experience and technical expertise

#### YEARS OF EXPERIENCE

43

#### AREAS OF EXPERTISE

Preconstruction Services  
Sports Facilities  
Construction of Mechanical & Electrical  
Systems  
Cost of Mechanical & Electrical Systems  
and Equipment

#### EDUCATION

Mechanical Engineering Technology  
Coursework  
Purdue University, Indianapolis

#### LICENSING/PROFESSIONAL AFFILIATIONS

HVAC Design II Seminar  
Total Quality in Construction Management  
Seminar  
Presentation Skills Workshop  
Trane and Carrier Air Conditioning Seminars  
Bell & Gossett Little Red Schoolhouse  
Seminar  
NIT 1999 National Electrical Code Seminar  
2002 National Conference on Building  
Commissioning  
LEED: New Construction - Construction  
Manager Responsibilities

#### PROJECT EXPERIENCE

##### **University of Louisville Papa John's Cardinal Stadium Expansion**

The addition of 10,500 stadium seats to the new upper deck seating bowl, 1,730 sheltered loge seats, 33 new suites and a new south terrace area directly beyond the current south end zone. Home of the University of Louisville Cardinals.  
Louisville, KY

##### **Purdue University Ross-Ade Stadium Renovation**

The renovation of the existing seating bowl consisting of 282,500 SF, removal and replacement of the existing pressbox, suite addition totaling 97,000 SF and addition and renovation of the main concourse totaling 170,000 SF. Home of the Purdue University Boilermakers.  
West Lafayette, IN

##### **RCA Dome Renovations**

An existing suite renovation into super suites, relocation of the existing press areas, club seating areas in the north and south lower seating bowl. Former home of the NFL's Indianapolis Colts.  
Indianapolis, IN

##### **Tropicana Field Renovation**

The complete renovation of the 43,000-seat domed baseball stadium and a team parking facility. Home of MLB's Tampa Bay Rays.  
St. Petersburg, FL

##### **DeVos Place Convention Center**

An 840,000 SF addition and 163,000 SF renovation to the existing convention center totaling 1,003,000 SF. Features include a grand gallery, exhibit hall, ballroom, meeting rooms, food service facilities, a 700-space on-site underground parking garage and DeVos Hall, a 2,446-seat symphony and performance hall.  
Grand Rapids, MI

##### **Duke Energy Center**

A 214,000 SF expansion of exhibit halls, ballroom and pre-function spaces and renovation of 548,000 SF of existing exhibit halls, meeting rooms and administrative offices. Work included the complete upgrade of all architectural finishes and mechanical and electrical services while maintaining the operations of the facility.  
Cincinnati, OH



## PATRICK G. BEYERS

### *Estimating/Preconstruction - Electrical/Special Systems*

#### PROJECT RESPONSIBILITIES

- Responsible for various estimating tasks through all phases of preconstruction and construction activities
- Evaluation of various construction alternatives
- Solicitation and preparation of bids
- Quantity takeoffs and pricing

#### YEARS OF EXPERIENCE

32

#### AREAS OF EXPERTISE

Project Management  
Estimating  
Electrical Work  
Construction Software  
Design Review

#### EDUCATION

Masters, Industrial Engineering  
Technology  
Purdue University  
B.S., Building Construction Technology  
Purdue University

#### LICENSING/PROFESSIONAL AFFILIATIONS

Indiana Electric League  
Indiana Subcontractors Association  
American Society of Professional Estimators  
OSHA Construction 30 Hour  
LEED: New Construction - Construction  
Manager Responsibilities

#### PROJECT EXPERIENCE

##### **Marlins Park**

A 937,000 SF, 37,000-seat, three-panel retractable roof baseball stadium featuring 42 luxury suites, eight party suites, home run porch, state-of-the-art concession and restroom amenities, a reflection of Miami's diverse culture, Western Plaza for year-round use, Taste of Miami food area, half-acre retractable window wall, street-level team store, and high definition scoreboard. Home of MLB's Miami Marlins.  
Miami, FL

##### **Nationals Park**

A 1,176,151 SF, 41,000-seat, open-air, state-of-the-art baseball stadium featuring 90 luxury suites, six levels, a five-level parking structure, a six-level parking structure and surface parking lot. Home of MLB's Washington Nationals.  
Washington, DC

##### **Purdue University Mackey Arena Renovation Study**

Cost estimating for a study by HNTB to renovate Mackey Arena.  
West Lafayette, IN

##### **Duke Energy Center**

A 214,000 SF expansion of exhibit halls, ballroom and pre-function spaces and renovation of 548,000 SF of existing exhibit halls, meeting rooms and administrative offices. Work included the complete upgrade of all architectural finishes and mechanical and electrical services while maintaining the operations of the facility.  
Cincinnati, OH

##### **Amway Center**

A new 800,000 SF, seven-level, 18,500-seat multi-purpose arena featuring 56 suites, 1,428 club seats, and 328 loge seats. Home of the NBA's Orlando Magic.  
Orlando, FL

##### **Maynard H. Jackson Jr. International Terminal**

A 1,430,000 SF terminal that includes new gates, custom offices, APM station, baggage handling system, parking structure, elevated roadways and APM train/utility connector to existing Concourse E. Gate, baggage, fuel pit and jet bridge modifications at existing Concourse E. Hunt is building this project in a joint venture with Holder, Manhattan and CD Moody.  
Atlanta, GA

*Abbreviated Resume*



## GARY L. SUMMERS

### *Estimating/Preconstruction - Civil/Structural*

#### PROJECT RESPONSIBILITIES

- Responsible for various estimating tasks through all phases of preconstruction and construction activities
- Evaluation of various construction alternatives
- Solicitation and preparation of bids
- Quantity takeoffs and pricing

#### YEARS OF EXPERIENCE

28

#### AREAS OF EXPERTISE

Preconstruction Services  
 Cost Estimating  
 Value Engineering  
 Constructability Evaluation

#### EDUCATION

B.S., Building Construction and  
 Technology  
 Purdue University

#### LICENSING/PROFESSIONAL AFFILIATIONS

2-MC2 Computer Estimating Training  
 Seminars  
 LEED: New Construction - Construction  
 Manager Responsibilities  
 OSHA Construction 30 Hour

#### PROJECT EXPERIENCE

##### **University of Louisville Papa John's Cardinal Stadium Expansion**

The addition of 10,500 stadium seats to the new upper deck seating bowl, 1,730 sheltered loge seats, 33 new suites and a new south terrace area directly beyond the current south end zone. Home of the University of Louisville Cardinals.  
 Louisville, KY

##### **Kauffman Stadium Expansion & Renovation**

A renovation and expansion to the 1,200,000 SF, 37,920 seat stadium, including a Hall of Fame Building, restaurant, three-story administration building, Diamond Club, plaza level concessions, restrooms, expanded concourses and several other new amenities and renovations. Home of MLB's Kansas City Royals.  
 Kansas City, MO

##### **Marlins Park**

A 937,000 SF, 37,000-seat, three-panel retractable roof baseball stadium featuring 42 luxury suites, eight party suites, home run porch, state-of-the-art concession and restroom amenities, a reflection of Miami's diverse culture, Western Plaza for year-round use, Taste of Miami food area, half-acre retractable window wall, street-level team store, and high definition scoreboard. Home of MLB's Miami Marlins.  
 Miami, FL

##### **DeVos Place Convention Center**

An 840,000 SF addition and 163,000 SF renovation to the existing convention center totaling 1,003,000 SF. Features include a grand gallery, exhibit hall, ballroom, meeting rooms, food service facilities, a 700-space on-site underground parking garage and DeVos Hall, a 2,446-seat symphony and performance hall.  
 Grand Rapids, MI

##### **Duke Energy Center**

A 214,000 SF expansion of exhibit halls, ballroom and pre-function spaces and renovation of 548,000 SF of existing exhibit halls, meeting rooms and administrative offices. Work included the complete upgrade of all architectural finishes and mechanical and electrical services while maintaining the operations of the facility.  
 Cincinnati, OH

##### **Amway Center**

A new 800,000 SF, seven-level, 18,500-seat multi-purpose arena featuring 56 suites, 1,428 club seats, and 328 loge seats. Home of the NBA's Orlando Magic.  
 Orlando, FL

*Abbreviated Resume*





## R. BRADLEY MORRIS

### Scheduling

#### PROJECT RESPONSIBILITIES

- Project scheduling
- Oversees the development of project schedules
- Monitors job progress through use of Primavera Project Planner and SureTrak
- Prepares final job cost summary

#### YEARS OF EXPERIENCE

38

#### AREAS OF EXPERTISE

Scheduling  
 Large Complex Projects  
 Cost Tracking  
 Project Controls  
 Jobsite Staff Supervision  
 Subcontractor Field Coordination  
 Owner, Designer and Contractor  
 Coordination

#### EDUCATION

B.S., Civil Engineering  
 University of Illinois

#### LICENSING/PROFESSIONAL AFFILIATIONS

Primavera Systems (P6 - P3 - SureTrak)  
 Member Project Management Institute  
 LEED: New Construction - Construction  
 Manager Responsibilities  
 1st Aid/ CPR/AED/BBP Certified

#### PROJECT EXPERIENCE

##### University of Illinois Memorial Stadium Renovation & Addition

The addition of a 170,000 SF Pressbox, 7,000-seat north grandstand and the renovation of concourses on the east and west sideline of the stadium. Home of the University of Illinois Fighting Illini.  
 Champaign, IL

##### Purdue University Ross-Ade Stadium Renovation

The renovation of the existing seating bowl consisting of 282,500 SF, removal and replacement of the existing pressbox, suite addition totaling 97,000 SF and addition and renovation of the main concourse totaling 170,000 SF. Home of the Purdue University Boilermakers.  
 West Lafayette, IN

##### University of Louisville Papa John's Cardinal Stadium Expansion

The addition of 10,500 stadium seats to the new upper deck seating bowl, 1,730 sheltered loge seats, 33 new suites and a new south terrace area directly beyond the current south end zone. Home of the University of Louisville Cardinals.  
 Louisville, KY

##### Kauffman Stadium Expansion & Renovation

A renovation and expansion to the 1,200,000 SF, 37,920 seat stadium, including a Hall of Fame Building, restaurant, three-story administration building, Diamond Club, plaza level concessions, restrooms, expanded concourses and several other new amenities and renovations. Home of MLB's Kansas City Royals.  
 Kansas City, MO

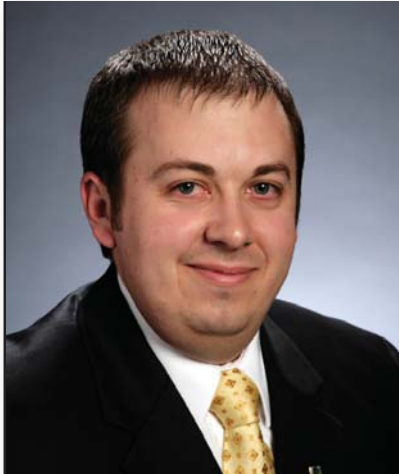
##### Duke Energy Center

A 214,000 SF expansion of exhibit halls, ballroom and pre-function spaces and renovation of 548,000 SF of existing exhibit halls, meeting rooms and administrative offices. Work included the complete upgrade of all architectural finishes and mechanical and electrical services while maintaining the operations of the facility.  
 Cincinnati, OH

##### Amway Center

A new 800,000 SF, seven-level, 18,500-seat multi-purpose arena featuring 56 suites, 1,428 club seats, and 328 loge seats. Home of the NBA's Orlando Magic.  
 Orlando, FL

*Abbreviated Resume*



## MATTHEW A. MONTGOMERY, ASSOCIATE DBIA *Logistics*

### PROJECT RESPONSIBILITIES

- Provides leadership, experience and technical expertise
- Foresees and resolves site logistics conflicts
- Prepares site logistics plans
- Overall site coordination, delivery coordination and site management
- Ensures client's expectations are met

### YEARS OF EXPERIENCE

16

### AREAS OF EXPERTISE

Change Order Negotiation  
 Cost Control Administration  
 Construction Document Review &  
 Administration  
 Estimating  
 Contract Administration

### EDUCATION

B.S., Construction Engineering &  
 Management  
 Purdue University

### LICENSING/PROFESSIONAL AFFILIATIONS

OSHA Construction 10 Hour  
 ACE Mentoring Program  
 Indianapolis Rebuilding Together Program  
 Indiana Constructors Association  
 Indiana Constructors Association Future  
 Leaders Organization (FLO)  
 Indiana Constructors Association Future FLO  
 Steering Committee  
 LEED Accredited Professional - U.S. Green  
 Building Council  
 Associate Design-Build Professional  
 Member - Design-Build Institute of America  
 (DBIA)

### PROJECT EXPERIENCE

#### **Purdue University Ross-Ade Stadium Renovation**

The renovation of the existing seating bowl consisting of 282,500 SF, removal and replacement of the existing pressbox, suite addition totaling 97,000 SF and addition and renovation of the main concourse totaling 170,000 SF. Home of the Purdue University Boilermakers.  
 West Lafayette, IN

#### **Kauffman Stadium Expansion & Renovation**

A renovation and expansion to the 1,200,000 SF, 37,920 seat stadium, including a Hall of Fame Building, restaurant, three-story administration building, Diamond Club, plaza level concessions, restrooms, expanded concourses and several other new amenities and renovations. Home of MLB's Kansas City Royals.  
 Kansas City, MO

#### **Ed Smith Stadium Renovations**

Renovation and expansion of the Ed Smith Spring Training Stadium, as the new spring training home of MLB's Baltimore Orioles. The project includes an 85,000 SF concourse, luxury suites, concessions, press-boxes, owners' suites, shaded standing areas to watch the game, and a complete renovation of the existing clubhouse.  
 Sarasota, FL

#### **Marlins Park**

A 937,000 SF, 37,000-seat, three-panel retractable roof baseball stadium featuring 42 luxury suites, eight party suites, home run porch, state-of-the-art concession and restroom amenities, a reflection of Miami's diverse culture, Western Plaza for year-round use, Taste of Miami food area, half-acre retractable window wall, street-level team store, and high definition scoreboard. Home of MLB's Miami Marlins.  
 Miami, FL

#### **Busch Stadium**

A 1,500,000 SF baseball facility, including 46,844 seats and 106 suites and party rooms. Additional scope of work included the demolition of old Busch Stadium. Home of MLB's St. Louis Cardinals.  
 St. Louis, MO



## KEVIN P. TURNER, CSP, CHST

### Safety/Labor Relations

#### PROJECT RESPONSIBILITIES

- Safety Director with overall safety/loss control for all projects performed in the region
- Assists regional managers and supervisors in interpreting and implementing safety/loss control policies and procedures
- Liaison between loss control personnel and claims related insurance carriers
- Oversees contract compliance with all safety/loss control issues
- Advises management on accident prevention matters

#### YEARS OF EXPERIENCE

15

#### AREAS OF EXPERTISE

OSHA Construction Programs, Training and Compliance

Crane and Structural Steel Erection Operations

Occupational Health, Industrial Hygiene and Environmental Training, Testing and Compliance

Workers Compensation and Construction Insurance

#### EDUCATION

B.S., Natural Resources and Environmental Management  
Ball State University

#### LICENSING/PROFESSIONAL AFFILIATIONS

Certified Safety Professional (CSP)

Certified Health and Safety Technician (CHST)

OSHA Construction Outreach Instructor (OSHA 500)

Hazardous Waste Operations and Emergency Response (HAZWOPER), Incident Commander

OSHA Construction 10/30 Hour Military

EM385-1-1 40 Hour Safety (UCSD 9300)

Excavation Competent Person

4-Hour Scaffold Safety (NYC)

#### PROJECT EXPERIENCE

##### University of Illinois Memorial Stadium Renovation & Addition

The addition of a 170,000 SF Pressbox, 7,000-seat north grandstand and the renovation of concourses on the east and west sideline of the stadium. Home of the University of Illinois Fighting Illini. Champaign, IL

##### Purdue University Ross-Ade Stadium Renovation

The renovation of the existing seating bowl consisting of 282,500 SF, removal and replacement of the existing pressbox, suite addition totaling 97,000 SF and addition and renovation of the main concourse totaling 170,000 SF. Home of the Purdue University Boilermakers. West Lafayette, IN

##### University of Louisville Papa John's Cardinal Stadium Expansion

The addition of 10,500 stadium seats to the new upper deck seating bowl, 1,730 sheltered loge seats, 33 new suites and a new south terrace area directly beyond the current south end zone. Home of the University of Louisville Cardinals. Louisville, KY

##### Kauffman Stadium Expansion & Renovation

A renovation and expansion to the 1,200,000 SF, 37,920 seat stadium, including a Hall of Fame Building, restaurant, three-story administration building, Diamond Club, plaza level concessions, restrooms, expanded concourses and several other new amenities and renovations. Home of MLB's Kansas City Royals. Kansas City, MO

##### DeVos Place Convention Center

An 840,000 SF addition and 163,000 SF renovation to the existing convention center totaling 1,003,000 SF. Features include a grand gallery, exhibit hall, ballroom, meeting rooms, food service facilities, a 700-space on-site underground parking garage and DeVos Hall, a 2,446-seat symphony and performance hall. Grand Rapids, MI

##### Duke Energy Center

A 214,000 SF expansion of exhibit halls, ballroom and pre-function spaces and renovation of 548,000 SF of existing exhibit halls, meeting rooms and administrative offices. Work included the complete upgrade of all architectural finishes and mechanical and electrical services while maintaining the operations of the facility. Cincinnati, OH

*Abbreviated Resume*



## L. RUSSELL DALTON

### *BIM / VDC Manager*

#### PROJECT RESPONSIBILITIES

- Analyzes design for assigned architectural, structural and MEP conversions to arrive at workable models and ensure constructability
- Checks for quality and accuracy of models, extracts quantities, clash detection and resolution, analyzes scheduling and cost, resolves workforce conflicts and creates documentation and representations
- Supports project teams with the use of 3D generated site logistics and site phasing
- Creates accurate 3D models as needed for plan checking and drawing QA, field production, and work flow planning/management
- Provides a 4D simulation for construction sequencing and track critical path evolutions by linking 3D models to the construction schedule
- Manages the shop drawings submittal process from coordinated 3D MEP models provided by project subcontractors
- Aggregates and prepares 3D models, providing owner with comprehensive and fully coordinated as-built information upon building close-out

#### YEARS OF EXPERIENCE

27

#### AREAS OF EXPERTISE

Autodesk - BIM Bentley Systems,  
Intergraph and Carlson Software  
Relationship Building  
Budget Control

#### EDUCATION

General Studies, Architectural Design  
Program  
University of Kentucky

#### LICENSING/PROFESSIONAL AFFILIATIONS

Autodesk, AutoCAD Fundamentals, Revit  
BIM, Civil 3D  
Intergraph Corporation, System Manager  
Level 1, I/Plot and A/Plot Application  
Training  
Intergraph Corporation, APDP and  
Project Architect/Layout Architectural  
Applications, InRoads  
Intergraph Corporat  
ion, SelectCAD Civil Applications  
Bentley Systems, Certified Instructor, Intro to  
MicroStation  
Bentley Systems, Certified Instructor, Moving  
to MircoStation  
Bentley Systems, Certified Instructor,  
MicroStation Basic Programming  
Bentley Systems, Certified Instructor,  
Productivity Workshop Series

#### PROJECT EXPERIENCE

##### **Marlins Park**

A 937,000 SF, 37,000-seat, three-panel retractable roof baseball stadium featuring 42 luxury suites, eight party suites, home run porch, state-of-the-art concession and restroom amenities, a reflection of Miami's diverse culture, Western Plaza for year-round use, Taste of Miami food area, half-acre retractable window wall, street-level team store, and high definition scoreboard. Home of MLB's Miami Marlins.  
Miami, FL

##### **Barclays Center**

A 670,000 SF multi-purpose arena featuring 18,000 seats, and 105 luxury suites. The facility will host NBA games, concerts, circuses, minor league hockey games and other family events. Future home of the NBA's Brooklyn Nets.  
Brooklyn, NY

##### **Pan Am Games Aquatics Centre Preconstruction**

Preconstruction for a 412,700 GSF for a four-level aquatics centre, field house and Sports Institute of Ontario.  
Toronto, ON

##### **Chatham County Detention Center Expansion**

Expansion and renovation to the existing detention center. Approximately 333,000 SF of new buildings, renovation/expansion, upgrading of existing security systems and installation of new facility-wide networked security management system with GUI based touch screens. New addition includes two four-level housing pod buildings, 852 additional inmate beds, new video visitation building, courtrooms, court holding, pre-booking, medical clinic and infirmary, laundry, plating kitchen, warehouse and commissary.  
Savannah, GA

##### **Denver Airport South Terminal Redevelopment**

A 630,000 GSF project that includes a 500-room Westin Hotel on a five level podium containing TSA Airport security screening facilities, a light rail train station, several signature canopies, and level 5 plaza area connecting this development to the existing terminal. Work also includes the extension of the AGTS structure, extension of the existing baggage handling system and integration of the existing tent roof structure with the new construction.  
Denver, CO

*Abbreviated Resume*



## CHAD M. SUMMERS

### *Estimating/Preconstruction - Architectural*

#### PROJECT RESPONSIBILITIES

- Responsible for various estimating tasks through all phases of preconstruction and construction activities
- Evaluation of various construction alternatives
- Solicitation and preparation of bids
- Quantity takeoffs and pricing

#### YEARS OF EXPERIENCE

3

#### AREAS OF EXPERTISE

Value Engineering  
Cost Estimating  
Preconstruction Services  
Cost Objectives

#### EDUCATION

B.S. Building Construction Management  
Purdue University

#### LICENSING/PROFESSIONAL AFFILIATIONS

Prolog Manager 7.5  
JavaScript Programming  
OSHA Construction 30 Hour  
Aerial Worker Platform Safety Course  
On Screen Takeoff

#### PROJECT EXPERIENCE

##### **Chatham County Detention Center Expansion**

Expansion and renovation to the existing detention center. Approximately 333,000 SF of new buildings, renovation/expansion, upgrading of existing security systems and installation of new facility-wide networked security management system with GUI based touch screens. New addition includes two four-level housing pod buildings, 852 additional inmate beds, new video visitation building, courtrooms, court holding, pre-booking, medical clinic and infirmary, laundry, plating kitchen, warehouse and commissary.  
Savannah, GA

##### **New Castle Correctional Facility Annex**

A 70,000 SF two-story correctional facility consisting of two building addition to existing facility, 512 beds, 256 cells.  
New Castle, IN

##### **Camp Atterbury Operational Training Complex 1 and 2**

247,686 SF of new construction and site improvements for three barracks buildings and one dining facility building.  
Edinburgh, IN

##### **Fort Benjamin Harrison Armed Forces Reserve Center**

A 211,000 SF campus redevelopment. Includes site and building demo with four new buildings for offices, training and maintenance.  
Indianapolis, IN

##### **JW Marriott Austin**

A 1,200,000 SF, 34-story hotel with three levels of underground parking, five levels of public space, and 28 guest levels with a total of 1,012 guestrooms. The public space includes a junior and grand ballroom, exhibition space, two restaurants and an outdoor pool and bar area.  
Austin, TX

##### **Hyatt Place Austin**

A 245,000 SF, 18-story hotel with 296 guest rooms, a 143 spot parking garage located on floors two through five and an indoor pool on the sixth floor.  
Austin, TX

# STADIUM RENOVATION



- BOWL RENOVATIONS
- SUITES
- CLUB SPACES
- CONCESSIONS
- STADIUM RENOVATION

## Sun Life Stadium Expansion Miami, FL

A 360,000 SF renovation and expansion to existing stadium that consisted of eight additional escalators, four elevators, additional concessions and retail spaces, as well as two mezzanines added to two levels. Expansion was for the BCS Championship and the Super Bowl. Home of the NFL's Miami Dolphins and the University of Miami Hurricanes.

- CONTRACT METHOD** Construction Management Agency / Owner's Representative
- CONTRACT AMOUNT** \$189,675,733
- COMPLETION DATE** August 2007
- OWNER** South Florida Stadium Corp.
- ARCHITECT** Populous
- PROPOSED STAFF INVOLVEMENT** C.L. Cross, Mike Schwan



- BOWL RENOVATIONS
- SUITES
- CLUB SPACES
- CONCESSIONS
- STADIUM RENOVATION

## EverBank Field Jacksonville, FL

A 700,000 SF, open-air football stadium featuring 73,000 to 83,000 seats and 94 suites. Work included the demolition of the existing Gator Bowl structure and playing field with the exception of the structural framework supporting the West Upper Concourse and Upper Level seating bowl. Home of the NFL's Jacksonville Jaguars.

- CONTRACT METHOD** Construction Manager @ Risk / Guaranteed Maximum Price
- CONTRACT AMOUNT** \$125,000,000
- COMPLETION DATE** August 1995
- M/WBE PARTICIPATION** Goals: 16% | Results: 22%
- OWNER** Jacksonville Jaguars
- ARCHITECT** Populous
- PROPOSED STAFF INVOLVEMENT** Scott Blanchard, C.L. Cross, Rick Petty

# STADIUM RENOVATION



- BOWL RENOVATIONS
- SUITES
- CLUB SPACES
- CONCESSIONS
- STADIUM RENOVATION

## Heinz Field Pittsburgh, PA

*A 1,500,000 SF, 65,000-seat open-air football stadium featuring 127 luxury suites and the Fan Experience Great Hall that memorializes the Steelers History and "Six Super Bowl Championships." Home of the NFL's Pittsburgh Steelers and the University of Pittsburgh Panthers.*

- CONTRACT METHOD** Construction Manager @ Risk / Guaranteed Maximum Price / Joint Venture
- CONTRACT AMOUNT** Confidential
- COMPLETION DATE** August 2001
- M/WBE PARTICIPATION** Goals: 35% | Results: 42%
- OWNER** Pittsburgh Steelers
- ARCHITECT** Populous
- PROPOSED STAFF INVOLVEMENT** Scott Blanchard, Mike Schwan, Brent Beardslee



- BOWL RENOVATIONS
- SUITES
- CLUB SPACES
- CONCESSIONS
- STADIUM RENOVATION

## Raymond James Stadium Suite Expansion Tampa, FL

*The build-out of 28 additional suites on the club level, four public restrooms and eight expanded public restroom facilities. Home of the NFL's Tampa Bay Buccaneers.*

- CONTRACT METHOD** Construction Manager @ Risk / Guaranteed Maximum Price
- CONTRACT AMOUNT** \$5,000,000
- COMPLETION DATE** November 2000
- OWNER** Tampa Sports Authority
- ARCHITECT** Wagner Murray Architects
- PROPOSED STAFF INVOLVEMENT** C.L. Cross

# STADIUM RENOVATION



- BOWL RENOVATIONS
- SUITES
- CLUB SPACES
- CONCESSIONS
- STADIUM RENOVATION

## University of Louisville Papa John's Cardi-Louisville, KY

*The addition of 10,500 stadium seats to the new upper deck seating bowl, 1,730 sheltered loge seats, 33 new suites and a new south terrace area directly beyond the current south end zone. Home of the University of Louisville Cardinals.*

<b>CONTRACT METHOD</b>	Construction Manager @ Risk / Guaranteed Maximum Price / Joint Venture / Negotiated Procurement
<b>CONTRACT AMOUNT</b>	Confidential
<b>COMPLETION DATE</b>	August 2010
<b>M/WBE PARTICIPATION</b>	Goals: 15%   Results: 18%
<b>OWNER</b>	University of Louisville
<b>ARCHITECT</b>	Luckett & Farley



- BOWL RENOVATIONS
- SUITES
- CLUB SPACES
- CONCESSIONS
- STADIUM RENOVATION

## University of Illinois Memorial Stadium Renovation & Addition

### Champaign, IL

*The addition of a 170,000 SF Pressbox, 7,000-seat north grandstand and the renovation of concourses on the east and west sideline of the stadium. Home of the University of Illinois Fighting Illini.*

<b>CONTRACT METHOD</b>	Construction Management Agency
<b>CONTRACT AMOUNT</b>	\$90,000,000
<b>COMPLETION DATE</b>	September 2008
<b>AWARDS</b>	2009 AISC National Merit Award
<b>OWNER</b>	The Board of Trustees of the University of Illinois
<b>ARCHITECT</b>	HNTB



# STADIUM RENOVATION



- BOWL RENOVATIONS
- SUITES
- CLUB SPACES
- CONCESSIONS
- STADIUM RENOVATION

## Purdue University Ross-Ade Stadium West Lafayette, IN

*The renovation of the existing seating bowl consisting of 282,500 SF, removal and replacement of the existing pressbox, suite addition totaling 97,000 SF and addition and renovation of the main concourse totaling 170,000 SF. Home of the Purdue University Boilermakers.*

<b>CONTRACT METHOD</b>	Construction Management Agency / Fixed Fee / Joint Venture / Owner's Representative
<b>CONTRACT AMOUNT</b>	\$69,341,248
<b>COMPLETION DATE</b>	December 2003
<b>OWNER</b>	Purdue University
<b>ARCHITECT</b>	HNTB



- BOWL RENOVATIONS
- SUITES
- CLUB SPACES
- CONCESSIONS
- STADIUM RENOVATION

## University of Oregon Autzen Stadium Expansion Eugene, OR

*A 300,000 SF 14,000-seat expansion increasing capacity to 56,000, addition of 29 luxury suites on two levels, press and skyboxes, restrooms, concessions, infrastructure, the upgrade of the video production area. Home of the University of Oregon Ducks.*

<b>CONTRACT METHOD</b>	Construction Manager @ Risk / Guaranteed Maximum Price / Joint Venture / General Contractor
<b>CONTRACT AMOUNT</b>	\$80,000,000
<b>COMPLETION DATE</b>	March 2003
<b>AWARDS</b>	2003 Northwest Construction Award of Excellence, Public Project
<b>OWNER</b>	University of Oregon
<b>ARCHITECT</b>	AECOM

**Proposed Program  
Management Staffing Costs  
*CITRUS BOWL RENOVATION***

Name	Title	% On-Site	Monthly Staff	Preconstruction Duration (Months)	Preconstruction Staff Costs	Construction Duration	Construction Staff Costs	Total Staff Costs
Scott Blanchard	Vice President	30%	\$ 10,080	3	\$ 30,240	27	\$ 272,160	\$ 302,400
CL Cross	Project Executive	100%	\$ 25,323	3	\$ 75,968	27	\$ 683,708	\$ 759,675
Mike Schwan	Project Manager (Arch/Civil/Struct/Cost)	100%	\$ 16,706	3	\$ 50,118	27	\$ 451,063	\$ 501,181
Brent Beardslee	Project Manager (Mech/Elec/Special Sys)	100%	\$ 16,195	3	\$ 48,586	27	\$ 437,270	\$ 485,856
Richard Petty	Field Operations Manager	100%	\$ 25,936	3	\$ 77,808	27	\$ 700,269	\$ 778,076
TBD	Cost Control/Accounting Engineer	100%	\$ 13,125	3	\$ 39,375	27	\$ 354,375	\$ 393,750

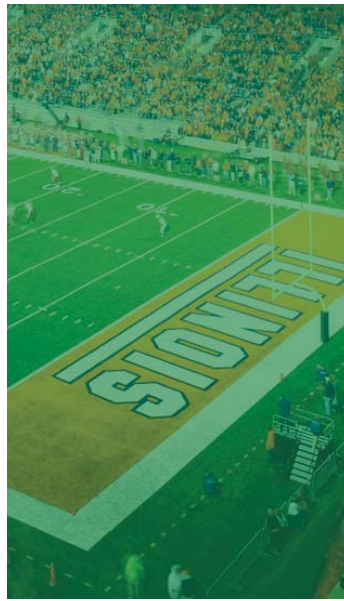
Totals \$ 322,094 \$ 2,898,844 \$ 3,220,938

General Proposal Notes

- 1) Costs above are for the professional program management staff.
- 2) Staff multiplier of 2.1 x DPE includes costs for payroll taxes, insurance, fringes, vehicles, computers, cell phones, information/technology & fee.
- 3) The costs above are not inclusive of project related general condition items (ie travel costs, office space, office rental, utilities, parking, equipment, etc.)  
We propose to bill these owner authorized cost on an actual cost basis with no markup.
- 4) Costs above are based on an anticipated schedule of 3 months for preconstruction from October 2012 thru December 2012.
- 5) Costs above are based on an anticipated schedule of 27 months for construction from January 2013 thru December 2014 with 3 additional months for project close out.

HUNTCONSTRUCTIONGROUP.COM

# HUNT STADIUMS



THE RIGHT PEOPLE. THE RIGHT RESULTS.®